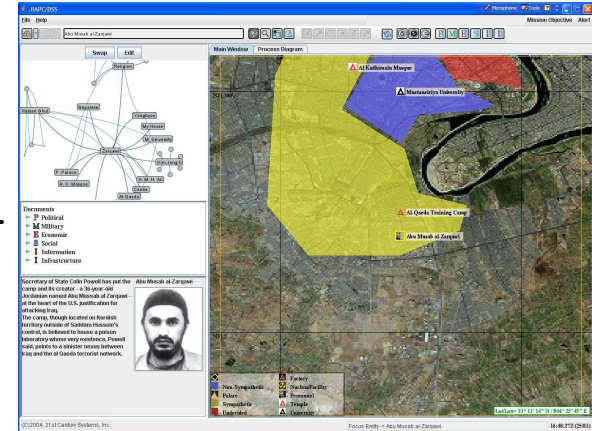




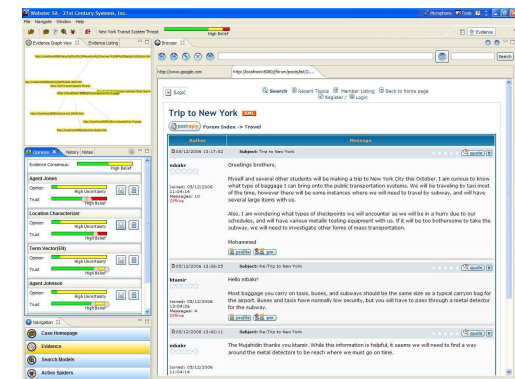
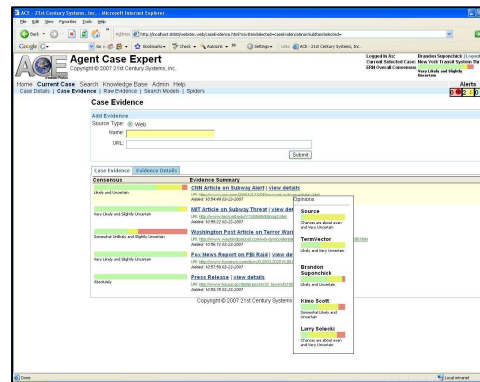
21st Century Systems, Inc.: Webster-ACE

- ✓ Humans & “Software Agents” Work to Confirm/Disprove Threat Hypothesis and Complete RFIs
- ✓ Integrated Hierarchical Mission Support
- ✓ Significantly Increase User Productivity, Reduce Decision Cycles, and Save Precious Human Resources.
- ✓ Quickly Correlate Disparate Information from Sources Associated by Varying Degrees of Reliability to Identify Behaviors like Malicious Intent or Terrorist Activity.
- ✓ Includes Trust, Pedigree, & Relevance Features
- ✓ Web Data, Electronic Documents, Multi-Media, Physical Intelligence
- ✓ Variety of Outputs for Sharing and Reporting Charts, Graphs, Reports, Dossiers, etc.
- ✓ Interoperability with Existing Applications
- ✓ Extensible to Virtually Any Data Input or Output

- Quickly Reveal Intel Hidden in Mass Data
- Find Unseen Relationships
- Visualize Complex Intel Environment
- Increase User Productivity
- Reduced Decision Cycle
- Share Intel in Distributed Environment and Generate Practical Reports
- Correlate & Fuse Disparate Intel with Pedigree



Rapidly Generates “Actionable Intelligence”



Webster-ACE is a comprehensive web-based IO decision support application providing fast & essential gathering, in-depth assessment, and management of all-source and types of intelligence.